



# AAXIS NANO TECHNOLOGIES PVT. LTD.

SOLUTIONS FOR A SUSTAINABLE ENVIRONMENT

## COMPANY PROFILE



# THE CONTENT

Who We Are	02
Mission / Vision / Values	03
Our services	04
Project Execution Process	06
Segments We Serve	07
Automation Solutions / Services	08
Our Partners	10
Our Presence	11
Company Culture	12
Customer Centricity	13
Sneak Peak	14



# WHO WE ARE ?

Founded in the year 2000, Aaxis Nano is an ISO 9001:2015, TUV NORD certified organization that specializes in providing best-in-class turnkey solutions for flow monitoring, automation & instrumentation, environment & emission monitoring and real-time data acquisition & management. With sustainable innovation & a strong commitment to customers as our core values, we collaborate with industries, manufacturers as well as local and government emission monitoring institutions to optimize operations for increased efficiency at reduced costs.

## Mission

To cultivate a culture of continuous growth through in-depth research and innovative engineering while being sensitive to environment and society. By continuing our efforts to upgrade skills and competency, we aspire to develop profitable solutions using the best tools and technologies.

## Vision

To set a benchmark in the field of Environment Management and Automation, create value for our customers and be recognized for our sustainable solutions. With innovation, integrity and environmental awareness as our fundamental values, we wish to make our planet cleaner, healthier and safer for current and future generations.

## VALUES



### Integrity

We inspire trust by doing what's best for the business and delivering what we promise



### Excellence

We deliver quality and value of highest standards across products, services and support



### Innovation

We transform unconventional ideas into reality and constantly strive to exceed expectations



### Teamwork

We focus on inclusive collaboration to bring our customers the best of passion and expertise



### Sustainability

We design sustainable solutions that drive revenue & growth while protecting the environment





# Our Services

## Ambient Air Quality Monitoring & Management



## Telemetry INSAT, VSAT, GPRS, GSM & IOT Modules



## Water & Waste Water Quality Monitoring & Management



## UV Disinfection, Treatment & Monitoring



## Turnkey Packages Electrical, Control & Instrumentation

## Analytical, Field Instrumentation & Control





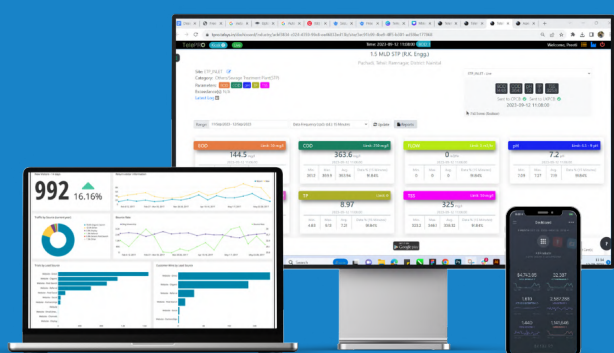
## Ground Water Monitoring



## Continuous Emission Monitoring System

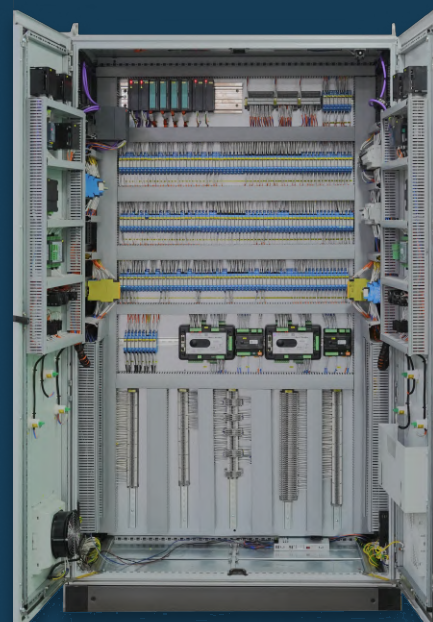


## Remote Process Controls & Dashboards



## DAS & Big Data Analytics

## Process Automation (PLC, IOT, IIOT & SCADA)



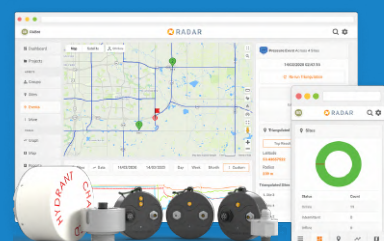
## Laboratory Instruments



## Odour Control System



## Pipe Leak Detection & Software



## Hydrology Metrology Geology Monitoring



# Automation Solutions

With our very own state-of-the-art manufacturing unit in Noida, where we combine innovative engineering with custom designing, Aaxis Nano promises to provide reliable and economic automation equipment and solutions to make your business future-ready. From PLC and DCS to Electrical Drives, MCC, PCC & Instrumentation, we offer comprehensive solutions for those looking to automate core industrial processes or build an entire automated ecosystem from the ground up.



As pioneers in the field and a top automation services provider, we identify trends, leverage opportunities and keep you ahead of the curve with extensive experience and unparalleled expertise in consulting, designing, development, integration, deployment and troubleshooting.

**Our customized, creative and cost-effective Industrial Automation Services include :**

- RTU & PLC SCADA Systems
- HMI Engineered Control Solutions
- Power System Protection Schemes
- Industrial Networking
- Protocol Integration
- Real-Time Data Acquisition & Remote
- Telemetry
- Time Synchronization
- Remote Access & Engineering
- Industrial Process Control & Automation
- Project & Technical Management
- IEC61850 application to SCADA and
- Protection Schemes

Aaxis Nano began its services at a time when there was a growing demand for training and technology-equipped specialized teams to help industries go from idea conception to implementation. Our growth can be attributed to our unwavering vision and utilization of futuristic ideas, tools & technologies to offer the best industrial automation solutions with exceptional process control and system integration services



## Turnkey PLC/ SCADA Solutions

From concept to commissioning, we provide industrial automation and digitization solutions utilizing latest innovations and integrated engineering. The scope of this package involves parts procurement, equipment installation, design & system engineering, custom control panel production and start up of your automated ecosystem.

## Custom Industrial Software Development

With an in-depth analysis of business requirements, we design customized software solutions that leverage the power of industrial automation, remote asset management, AI based data analytics and predictive maintenance for the highest levels of efficiency at the lowest operational costs. We also provide a Plug-and-Play troubleshooting and maintenance suite for rapid response in critical situations.

*Our Automation Division specializes in providing turnkey integrated Industrial Automation Solutions that start from the plant floor (PLC/HMI, SCADA) and go up to the Manufacturing Information System (MIS). This enables our clients to boost their operational efficiency & performance and achieve safety & compliance objectives. Real-time monitoring and reporting help reduce downtime for maximized system availability and smooth running of operations. It also facilitates better governance by enhancing upper-level supervision of crucial functions and processes.*

# Reliability & Condition Monitoring Solutions

Utilizing the power of sensors, data analytics and artificial intelligence, we devise systems that provide meaningful insights on critical operating parameters to detect anomalies and predict maintenance needs before they turn into system-critical failures. Industries like Power Generation, Petrochemicals, Water and Wastewater Treatment & Distribution, and Refineries & Pharmaceuticals have greatly benefitted from our reliable, cost-effective and easy-to-maintain intelligent integrated condition monitoring solutions (CMS). By implementing

Reliability Centered Maintenance (RCM) strategies, we enable our clients to identify business-critical assets of their facility and optimize their maintenance strategies for increased equipment reliability and availability. We match assets with the most cost-effective maintenance plans to ensure maximum machine uptime at minimum costs. Our modern RCM systems that run on high-end technologies like data analytics and cloud make capturing, analyzing, safeguarding and leveraging crucial asset data easy and effective.

## Electrical & Control Panel Assembly

Our in-house facility, equipped with modern facilities and run by domain experts, has an unparalleled capability to design and develop custom control & electric panels with a wide variety of industrial applications. From initial information gathering and detailed requirement analysis to installation and continuous improvement, we cover every aspect of the process with special attention to quality, timeline and budget. We offer complete and partial system installation services with after-sales assistance throughout the life of the product.

## Field Services

Our field instrumentation services match your requirement with the right technology and best-practice expertise when it comes to procurement & delivery, installation of I&C systems, NCR (Non-Conformances) management, field cabling & termination, equipment installation, inspection, verification & calibration.

Automation  
Services



# Project Execution Process



## Analysis

After gathering actionable insights on business objectives and end-user needs, we convert project goals into system functions, determine the scope, budget, and timelines of deliverables, brainstorm initial ideas for prototypes and establish specifications for software, hardware and network requirements.

At this stage, we use requirements specifications from the previous step to design thorough system architecture and IT infrastructure documents with detailed information on various parameters like functionality, risk, reliability, scalability, testing strategy, budget, schedule etc. Once approved by all stakeholders and signed by concerning parties, the Design Document Specification (DDS) is sent into production.



## Design



## Development

In this phase, technologically evolved model-based design techniques are leveraged to create mathematical and visual models of complex control systems. These models are then used for the development, simulation and verification of embedded controllers.

This phase is crucial to ensure that the product meets intended functional requirements adhered to SLA and is compliant with industry and regulatory standards. Abnormalities and deviations are documented and addressed before project delivery. The phase ends with user, technical, management and business acceptance.



## Factory Acceptance Testing ( FAT )

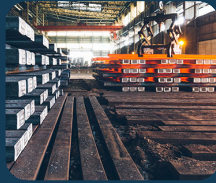


## Commissioning

This step involves the installation of software and hardware equipment on the production site with hands-on user training and successful integration within the existing production ecosystem. Our team of skilled engineers, trained in the programming of all major PLC systems and HMI graphic designing, also ensure seamless data transition to the client's Management Information System/Maintenance Management Software.



Agriculture & Irrigation



Steel & Iron



Petrochemical



Cement



Oil & Gas



Pharmaceuticals



Food & Beverages



Paper & Pulp



Refining



Aluminium



Zinc



Dye & Dye Intermediates



Mining



Sewage Treatment Plants



Power Plants



Sugar



Textile



Distillery

# Our Partners



# Our Presence



***"We have a strong pan-India presence with offices in all major Indian cities. With diversity and inclusion as our guiding force, we bring to the table new perspectives and ingenious innovations, thus driving exceptional results and higher profits for our clients."***

***Ours is a dynamic, driven and dedicated workforce with a blend of automation engineers, creative designers, quality assurance professionals and IT consultants who work together to build customized solutions for all your digital needs."***





## Company Culture

Progressive corporate culture is the backbone of a content workforce and helps create an environment that fosters trust and loyalty. Of all the ingredients that make up for a nurturing, collaborative and positive organizational culture, the most important ones for us are –

- Two-way Communication & Transparency
- Respect, Fairness & Teamwork
- Timely Employee Recognition & Appreciation
- Involvement & Empowerment
- Innovation, Inspiration & Excellence

Our reputation as an equal opportunity employer has not only helped us hire and retain the best talent but also enabled us to achieve amazing results by letting our employees explore the full potential of their capabilities in a challenging and cooperative setting. We believe in leading by example and inspiring our workforce to engage in an open, continual flow of ideas, thus enhancing morale and performance.



# Customer Centricity

At Axis Nano, we put the customer first and at the centre of everything we do. By cultivating a culture of a consultative and inclusive approach to development, we have been able to consistently achieve and deliver high-quality solutions to our customers. Open communication and outreach have helped us add ongoing value and build long-lasting relationships with our clients. We harness the power of AI and Data Analytics to reveal crucial business insights that help us curate custom solutions with improved personalization across products and solutions.

With great attention to detail, we align each process, strategy and decision with the best interest of our customers and it is with this customer-centric culture that we aspire to turn every customer expectation into reality.











# Reach out to us



+91 742 854 1532  
+91 120 415 9238



[info@aaxisnano.com](mailto:info@aaxisnano.com)



[www.aaxisnano.com](http://www.aaxisnano.com)



B-46, Sector-59, Noida, Delhi  
NCR, Uttar Pradesh, 201301

